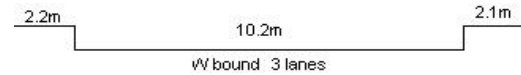
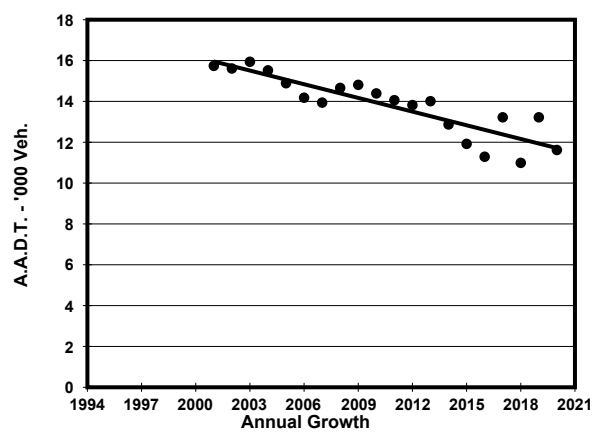
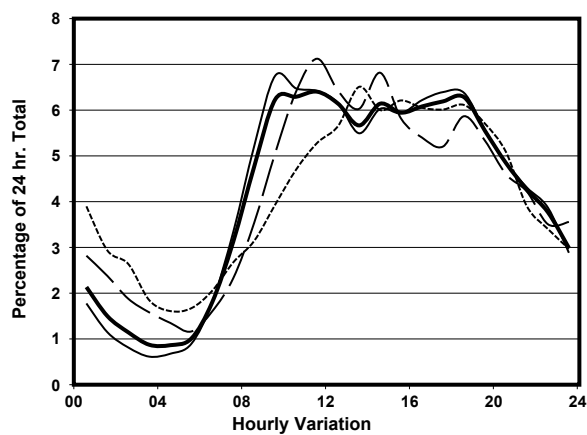
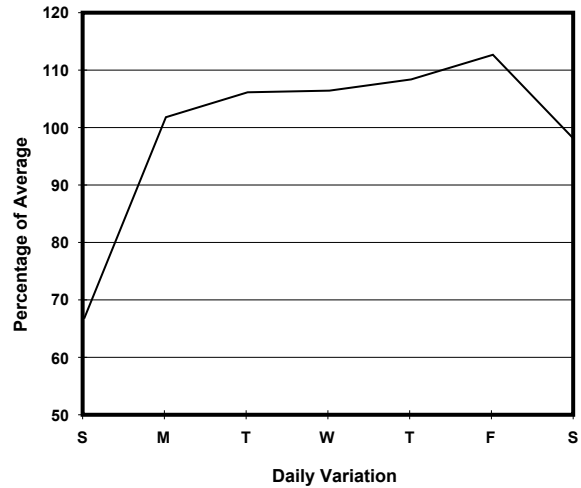
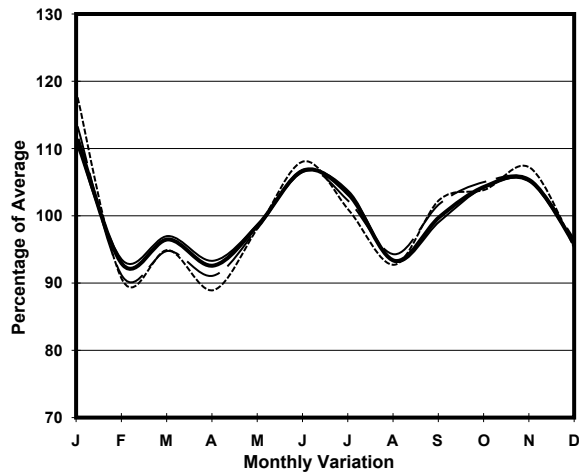


YEAR 2020
 COVERAGE (B) STATION 2208
 ROAD NETWORK MAJOR
 ROAD TYPE PRIMARY DISTRIBUTOR

LINK QUEEN'S RD C (from QUEEN VICTORIA ST to BONHAM STRAND)



1. TRAFFIC FLOW VARIATION AND GROWTH



— All day — Mon. - Fri. Sat. - - - - Sun.

2. TRAFFIC CHARACTERISTICS (BY DIRECTION)

Parameter	All - Day	Mon. - Fri.	Sat.	Sun.
WEST BOUND				
A.A.D.T.	11620	12660	11560	7910
R 12 / 24 - %	69.3	70.8	66	62.3
R 16 / 24 - %	87.7	89.4	83.7	80.4
AM Peak Hour	0900-1000	0900-1000	0900-1000	0900-1000
One-way flow at AM peak hour	720	860	590	310
T - % (AM)	-	6.5	-	-
PM Peak Hour	1800-1900	1700-1800	1800-1900	1800-1900
One-way flow at PM peak hour	730	810	680	480
T - % (PM)	-	5.4	-	-
Prop.of commercial vehicles - 16 hr.	-	6.9	-	-
 A.A.D.T.	-	-	-	-
R 12 / 24 - %	-	-	-	-
R 16 / 24 - %	-	-	-	-
AM Peak Hour	-	-	-	-
One-way flow at AM peak hour	-	-	-	-
T - % (AM)	-	-	-	-
PM Peak Hour	-	-	-	-
One-way flow at PM peak hour	-	-	-	-
T - % (PM)	-	-	-	-
Prop.of commercial vehicles - 16 hr.	-	-	-	-

3. OTHER INFORMATION AND COMMENT

4. Vehicle classification and occupancy - Monday to Friday

Time		Class of vehicle									
		Motor Cycle	Private Car	Taxi	Private LB	PLB	Goods veh.		Non Fr. Bus	Fr. Bus	
							Light	M & H		SD	DD
0700-0800	Pro	1.9	19.4	32.4	2.8	2.8	32.4	0.9	0.0	0.0	7.4
	Ocp	1.0	1.2	1.4	1.3	6.3	1.5	1.0	0.0	0.0	9.8
0800-0900	Pro	6.1	30.6	41.7	0.6	0.6	12.8	1.7	0.0	0.0	6.0
	Ocp	1.0	1.1	1.2	1.0	7.0	1.7	2.0	0.0	0.0	13.2
0900-1000 Peak hour	Pro	2.7	40.7	33.1	0.0	0.9	16.1	0.4	0.4	0.0	5.7
	Ocp	1.0	1.1	1.2	0.0	8.0	1.4	2.0	2.0	0.0	11.6
1000-1100	Pro	5.4	36.4	32.0	1.0	0.0	18.2	1.0	0.0	0.0	6.0
	Ocp	1.0	1.3	1.3	3.5	0.0	1.5	1.5	0.0	0.0	10.3
1100-1200	Pro	0.0	43.9	22.7	1.1	0.0	24.8	1.6	0.0	0.0	5.9
	Ocp	0.0	1.2	1.3	3.0	0.0	1.6	1.0	0.0	0.0	10.2
1200-1300	Pro	7.6	44.9	26.0	0.9	0.5	13.7	1.9	0.0	0.0	4.6
	Ocp	1.0	1.4	1.6	2.5	1.0	1.4	1.8	0.0	0.0	11.4
1300-1400	Pro	1.2	39.9	33.6	0.6	0.0	15.6	1.2	0.0	0.0	7.8
	Ocp	1.0	1.2	1.5	1.0	0.0	1.4	1.5	0.0	0.0	11.7
1400-1500	Pro	2.0	45.1	27.7	2.0	0.0	16.9	1.0	0.0	0.0	5.3
	Ocp	1.0	1.3	1.4	1.8	0.0	1.9	1.0	0.0	0.0	10.0
1500-1600	Pro	0.0	51.0	22.6	2.2	0.0	16.8	0.0	0.0	0.0	7.5
	Ocp	0.0	1.5	1.5	3.0	0.0	1.4	0.0	0.0	0.0	14.9
1600-1700	Pro	1.2	53.7	25.1	0.0	0.0	13.4	0.6	0.0	0.0	6.0
	Ocp	1.0	1.3	1.8	0.0	0.0	1.3	1.0	0.0	0.0	17.6
1700-1800	Pro	1.5	45.8	40.3	0.5	1.0	5.5	0.0	0.0	0.0	5.4
	Ocp	1.0	1.3	1.6	3.0	1.0	1.3	0.0	0.0	0.0	22.8
1800-1900	Pro	2.4	58.1	27.4	0.0	0.0	5.9	0.0	1.0	0.0	5.3
	Ocp	1.0	1.5	1.9	0.0	0.0	1.4	0.0	12.5	0.0	25.9
1900-2000	Pro	6.3	56.4	26.9	0.0	0.5	3.2	1.1	0.0	0.0	5.7
	Ocp	1.1	1.6	2.0	0.0	8.0	1.5	2.5	0.0	0.0	21.7
2000-2100	Pro	6.8	33.0	48.4	0.0	0.6	4.0	1.1	0.0	0.0	6.0
	Ocp	1.1	1.4	1.6	0.0	6.0	1.9	1.0	0.0	0.0	13.0
2100-2200	Pro	5.8	31.7	52.3	0.6	1.9	1.3	1.3	0.0	0.0	5.0
	Ocp	1.2	1.7	1.6	4.0	2.3	2.0	1.5	0.0	0.0	12.9
2200-2300	Pro	3.3	28.2	58.1	0.0	0.0	4.2	0.0	0.0	0.0	6.2
	Ocp	1.3	1.6	1.4	0.0	0.0	1.8	0.0	0.0	0.0	13.3
16 hours	Pro	3.5	42.2	33.7	0.7	0.5	12.5	0.9	0.1	0.0	5.9
	Ocp	1.1	1.4	1.5	2.4	4.7	1.5	1.5	9.0	0.0	14.4

Legend: Pro. Proportion of vehicles in % (Sum may not add up to 100% due to figure rounding)*

Ocp. Average occupancy of vehicles including both driver and passengers*

M&H Medium and Heavy

* All traffic data are collected from combined bounds